

7th Annual Women and Heart Disease Symposium

Introduction and Overview

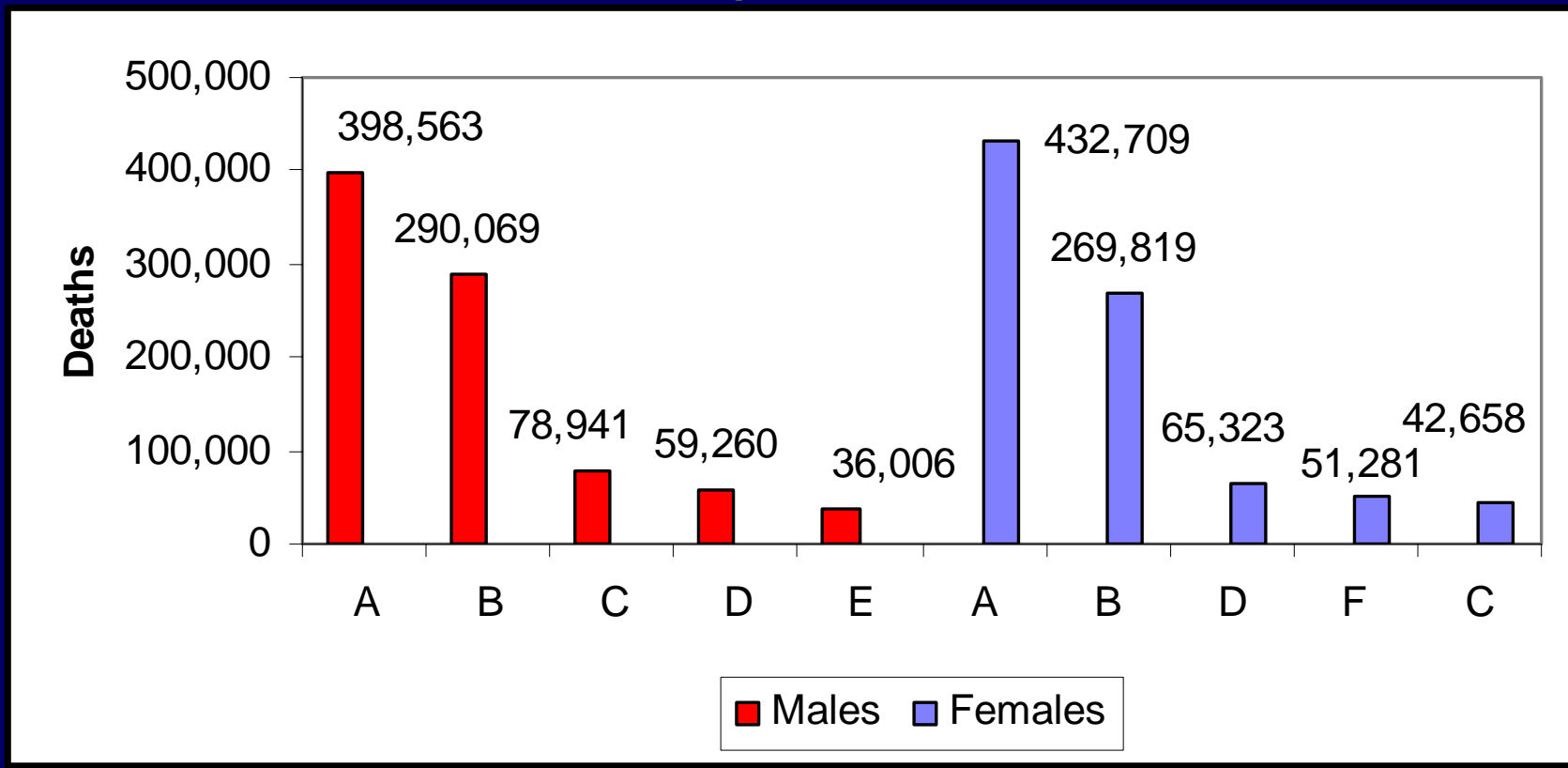
Santosh Gill, M.D. FACC

Medical Director, Women's Heart
Center at Rush-Copley Heart
Institute

A program of Fox Valley
Cardiovascular Consultants



CVD: Leading Cause of death



A CVD (I00-I99; Q20-Q28)

B Cancer

C Accidents

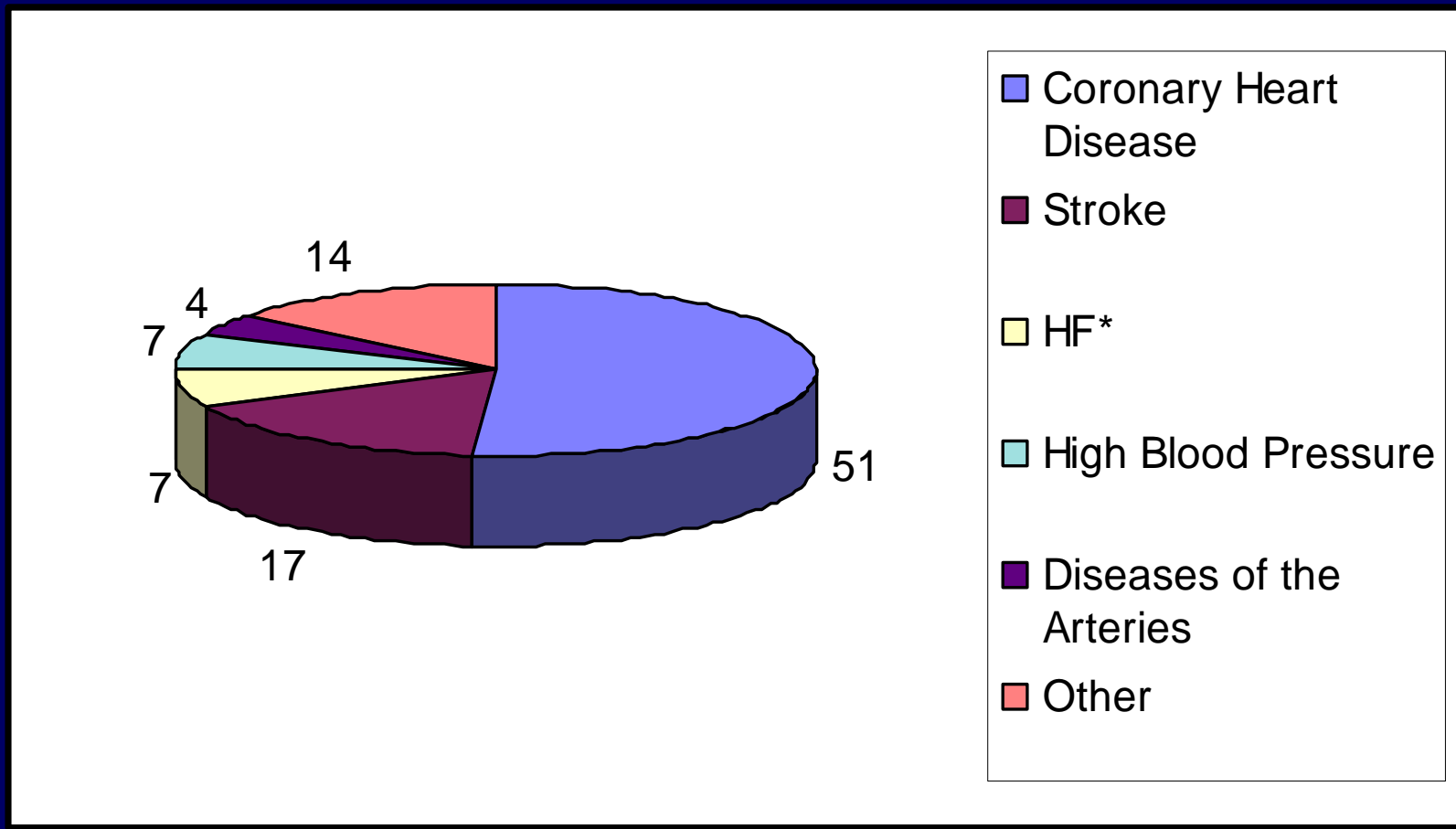
D Chronic Lower Respiratory Diseases

E Diabetes Mellitus

F Alzheimer's Disease

CVD and other major causes of death for all males and females (United States: 2006). Source: NCHS and NHLBI.

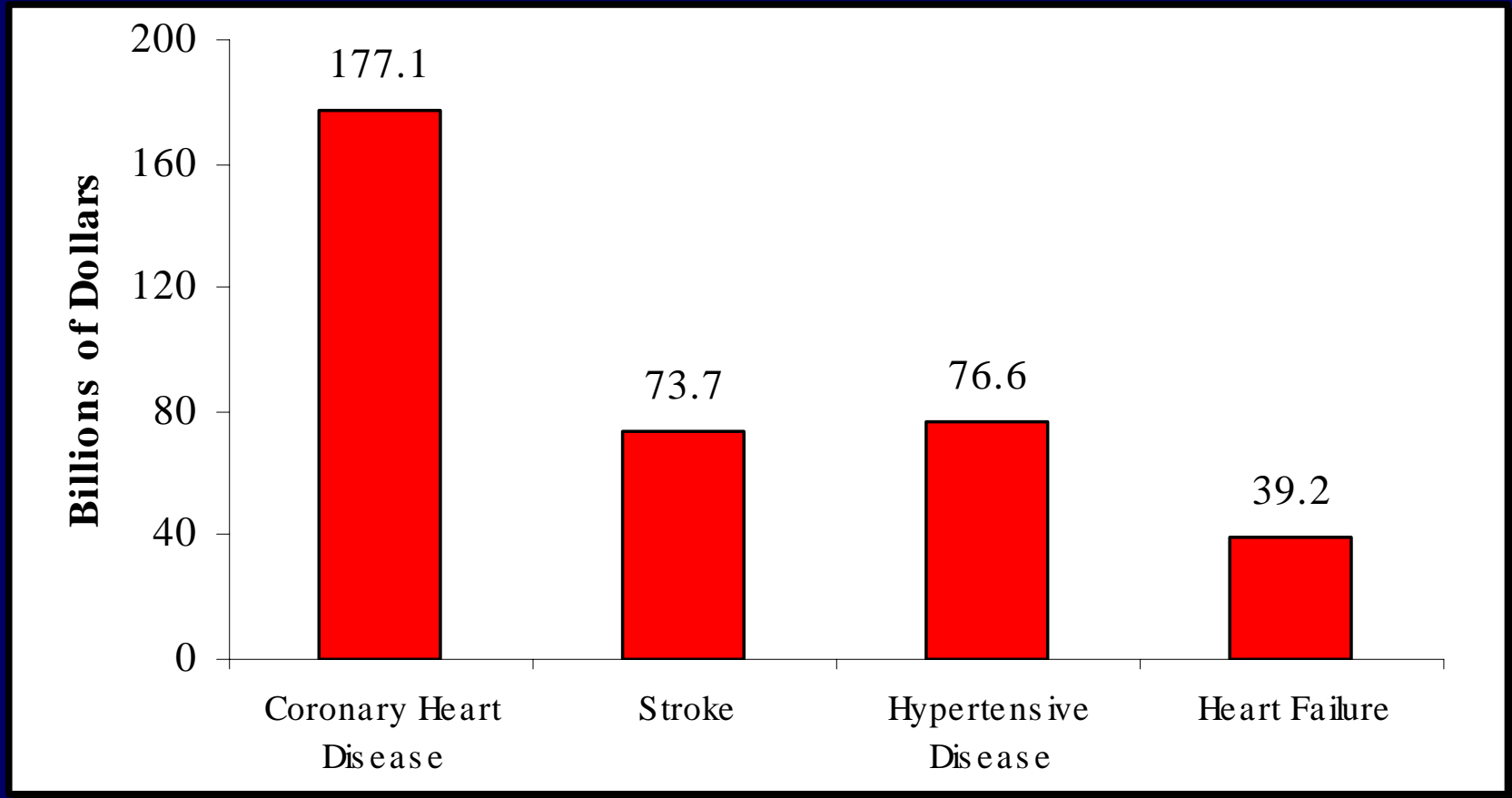
Heart Failure: Contribution to CVD Death



Percentage breakdown of deaths from cardiovascular diseases (United States: 2006) * - Not a true underlying cause.

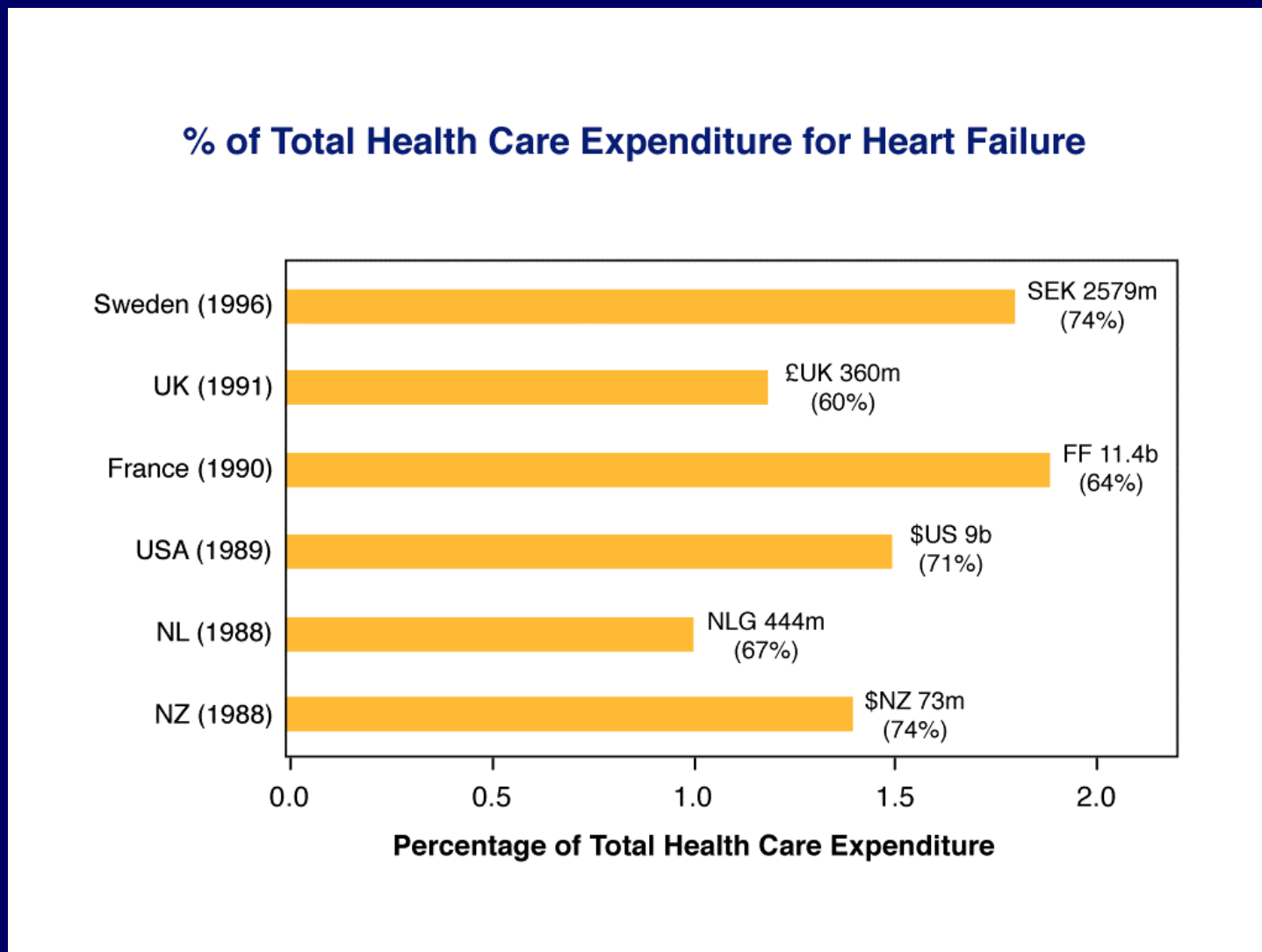
Source: NCHS.

Heart Failure: Health Care Cost

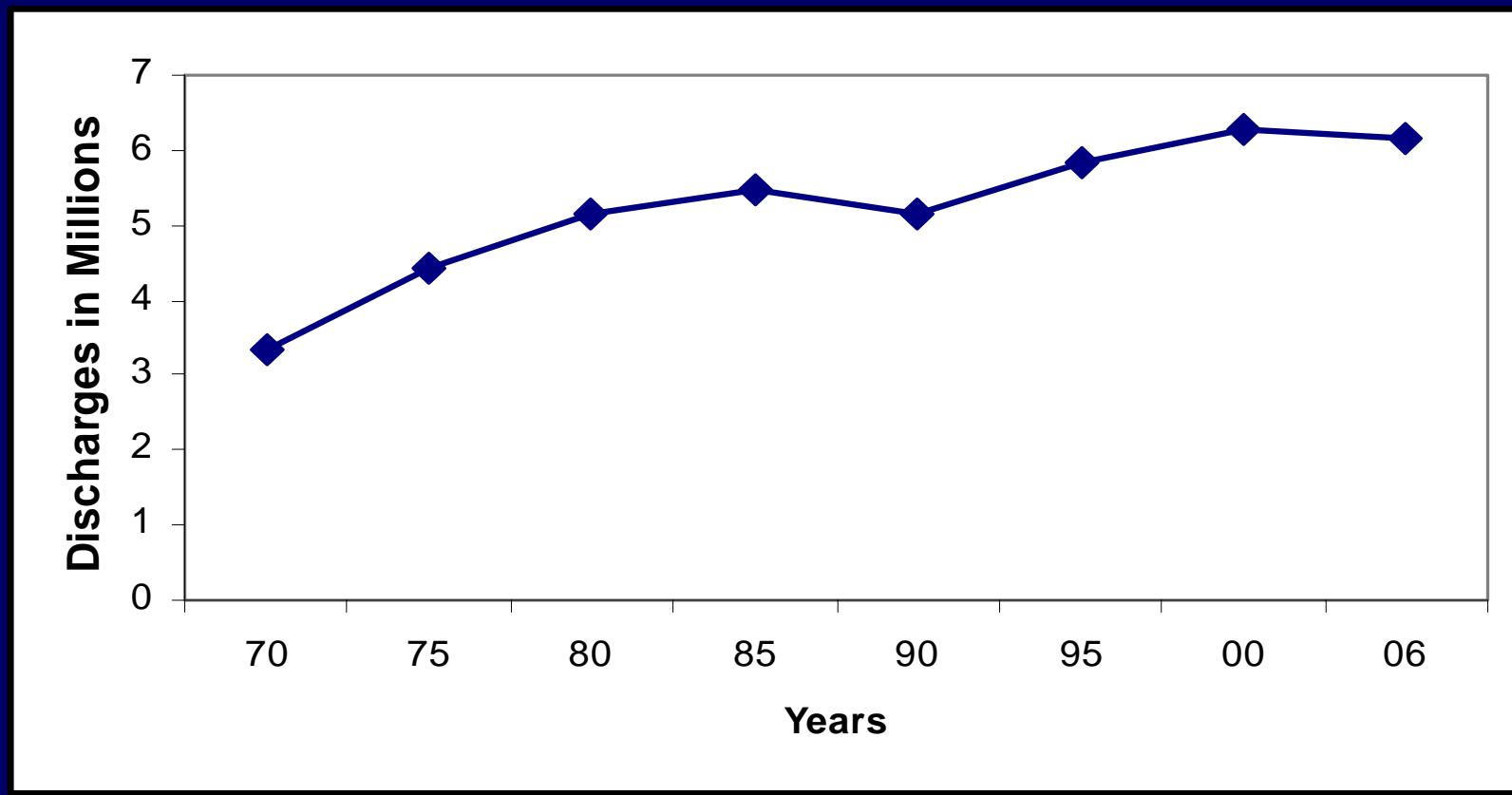


Estimated direct and indirect costs (in billions of dollars) of major cardiovascular diseases and stroke (United States: 2010). Source: NHLBI.

Heart Failure: Health Care Cost



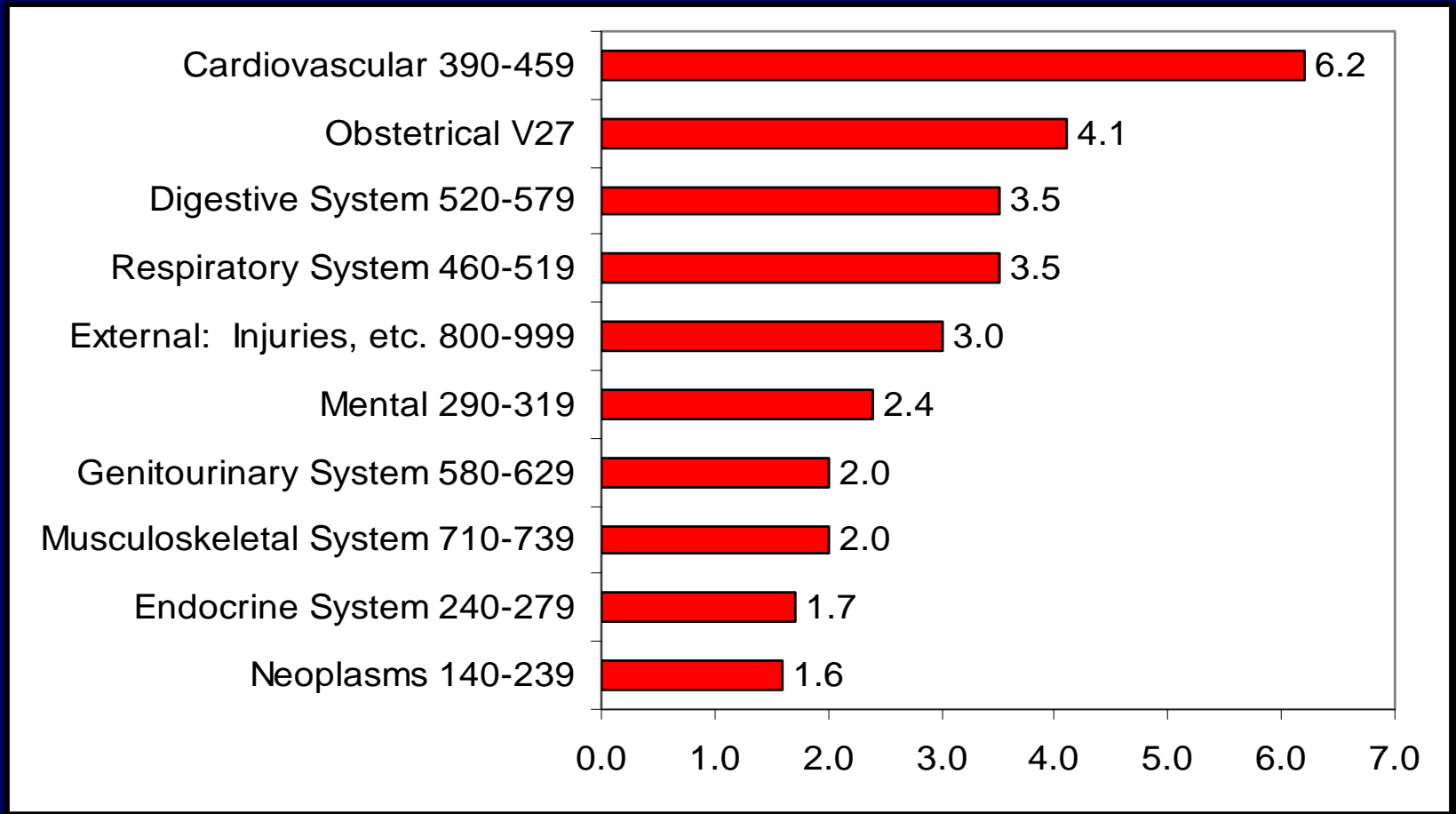
Hospital Discharges: CVD



(United States: 1970-2006). Note: Hospital discharges include people discharged alive, dead and status unknown.

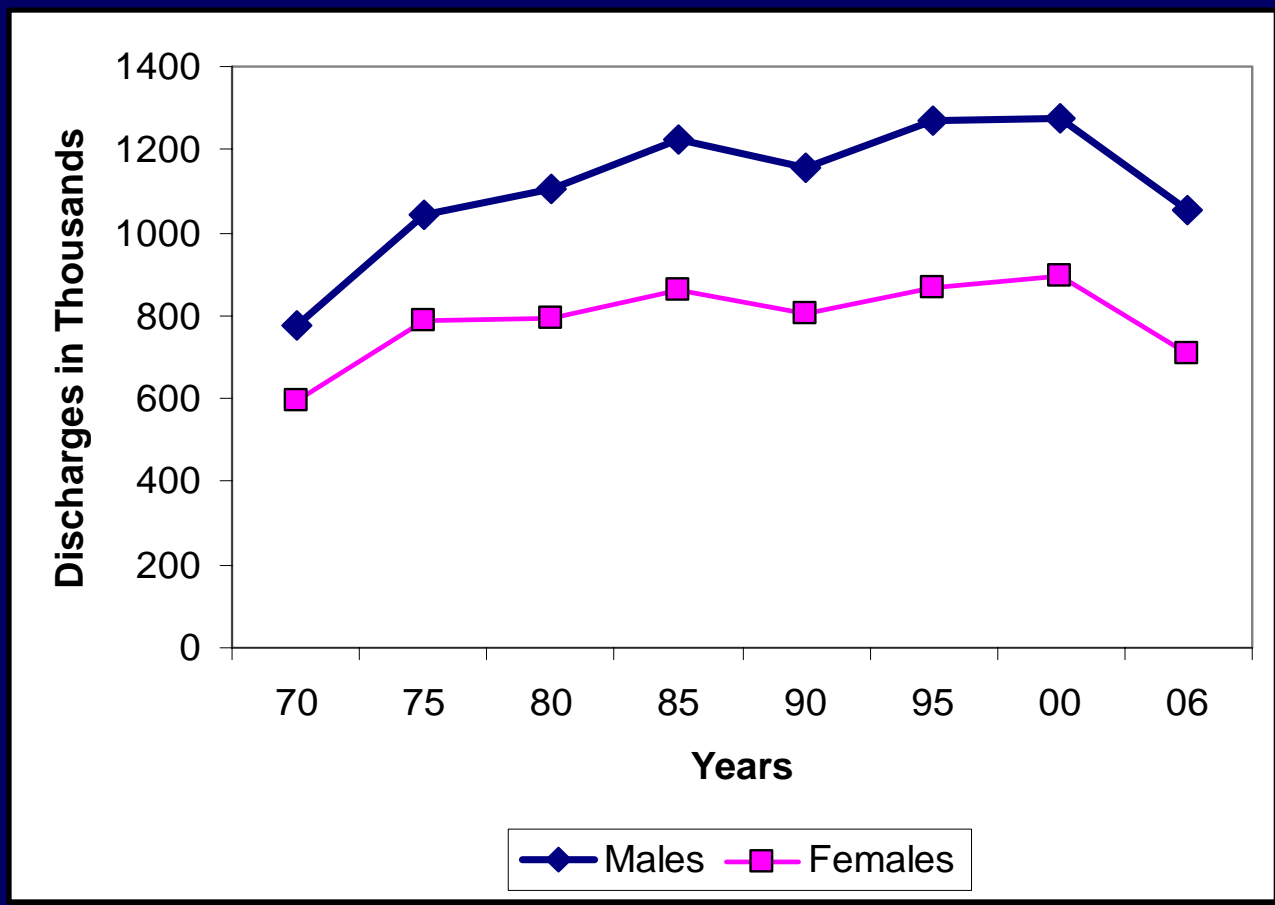
Source: NCHS and NHLBI.

Hospital Discharges: CVD



Hospital Discharges (in millions) for the 10 Leading diagnostic Groups (United States: 2006). Source: NHDS/NCHS and NHLBI.

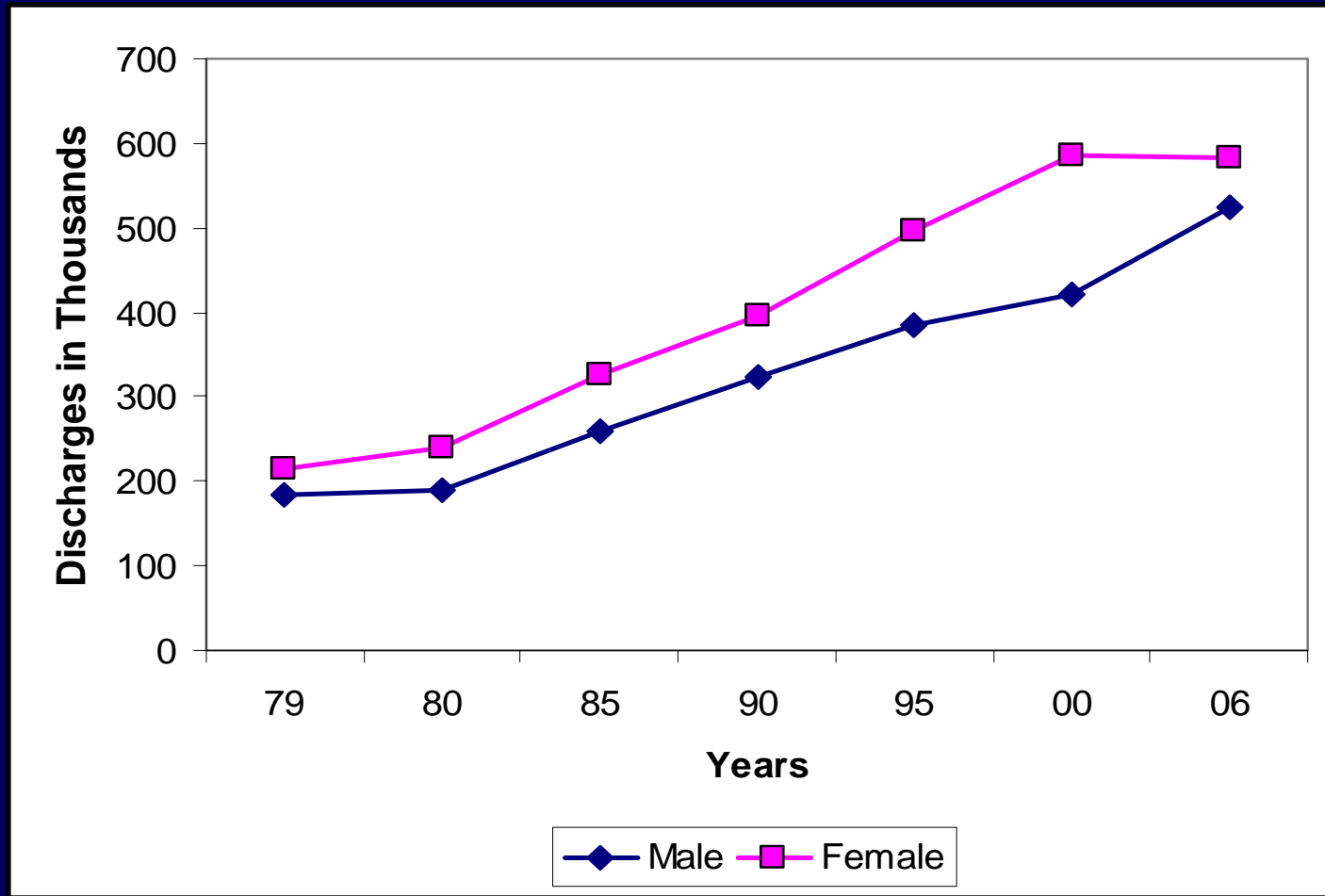
Hospital discharges :CAD



(United States: 1970-2006). Source: NHDS/NCHS.

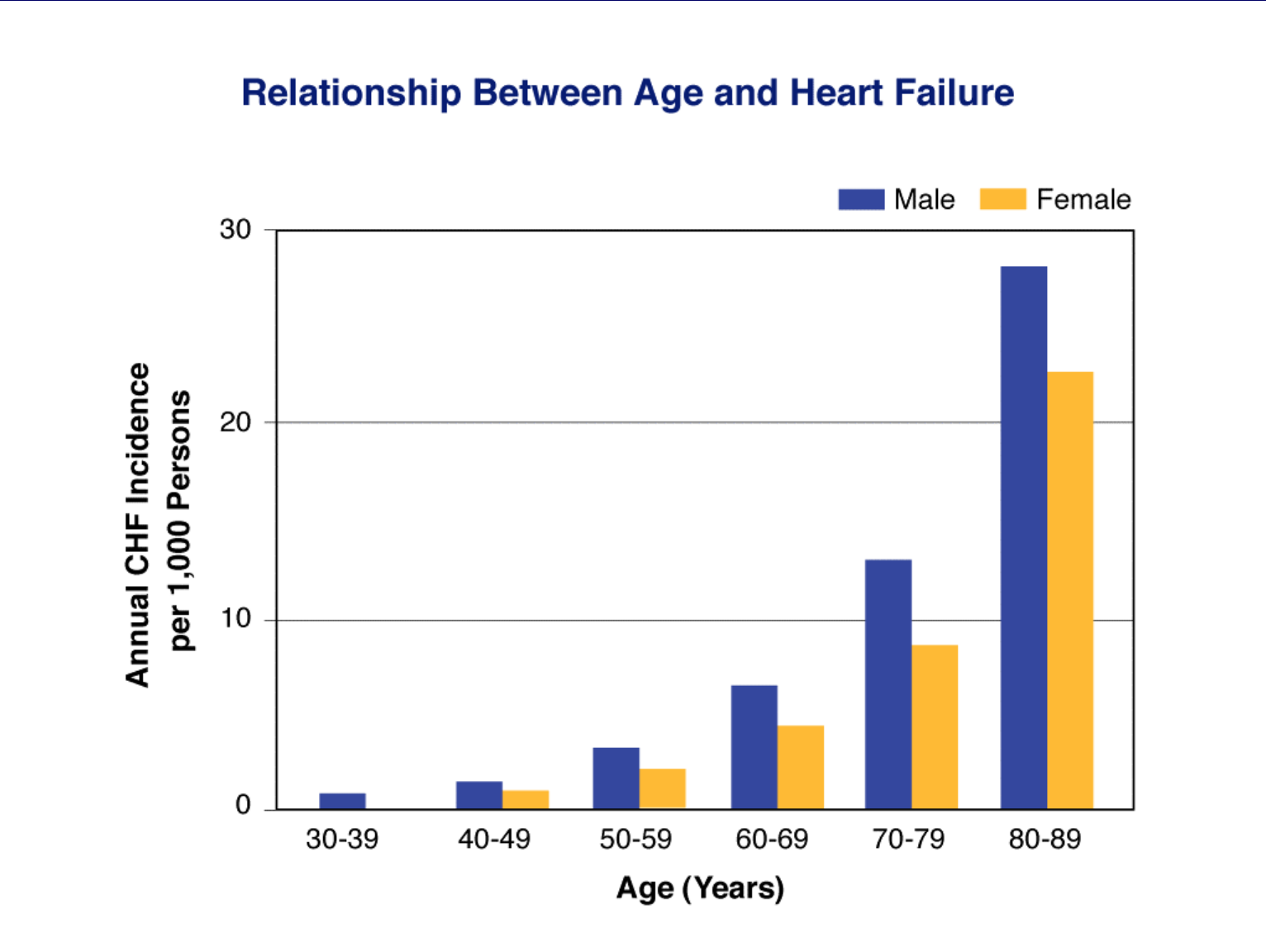
Note: Hospital discharges include people discharged alive, dead, and status unknown.

Hospital Discharges: Heart failure



(United States: 1979-2006). Source: NHDS/NCHS and NHLBI.
Note: Hospital discharges include people discharged alive, dead and status unknown.

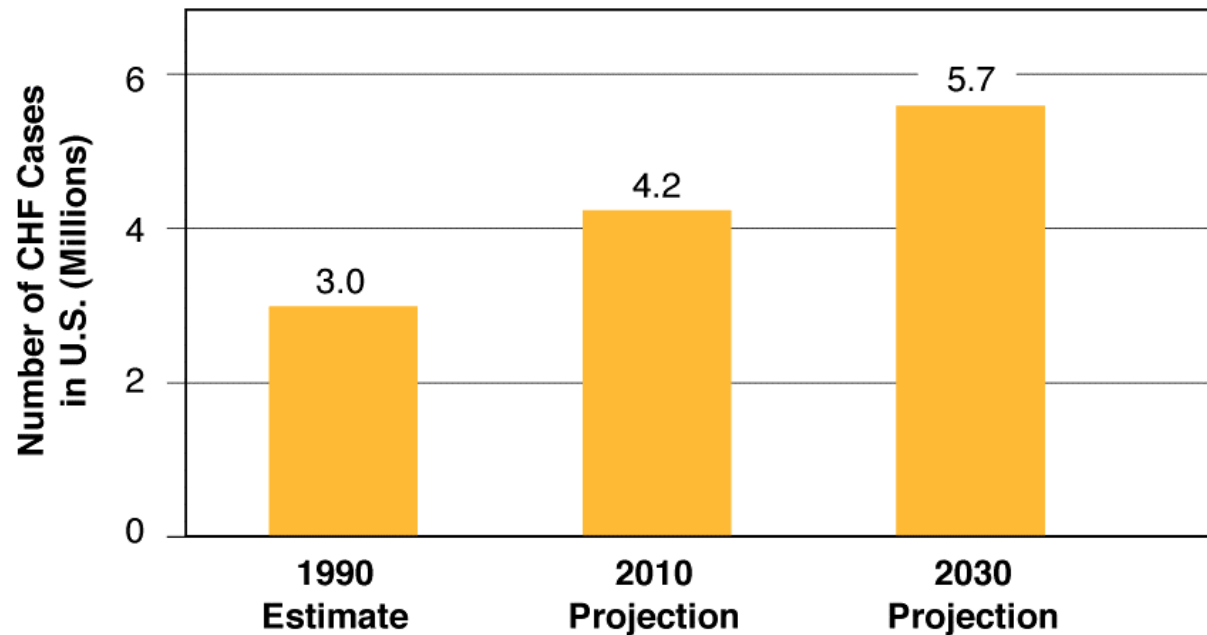
Aging and Heart Failure



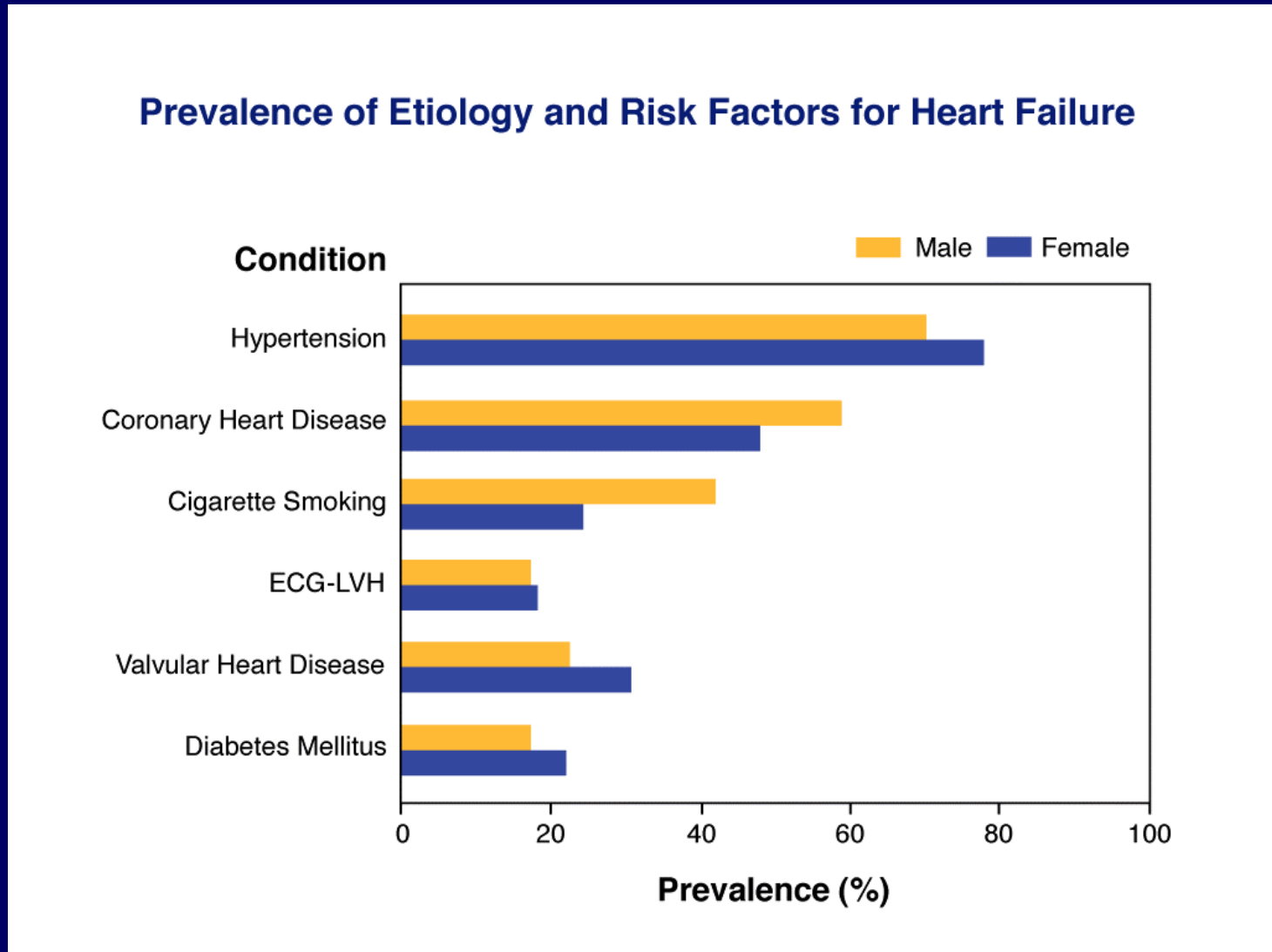
Epidemiology, Etiology, and Public Health Implications of Heart Failure

Heart Failure Projections

**CHF Prevalence to Nearly Double by Year 2030
as U.S. Population Ages**



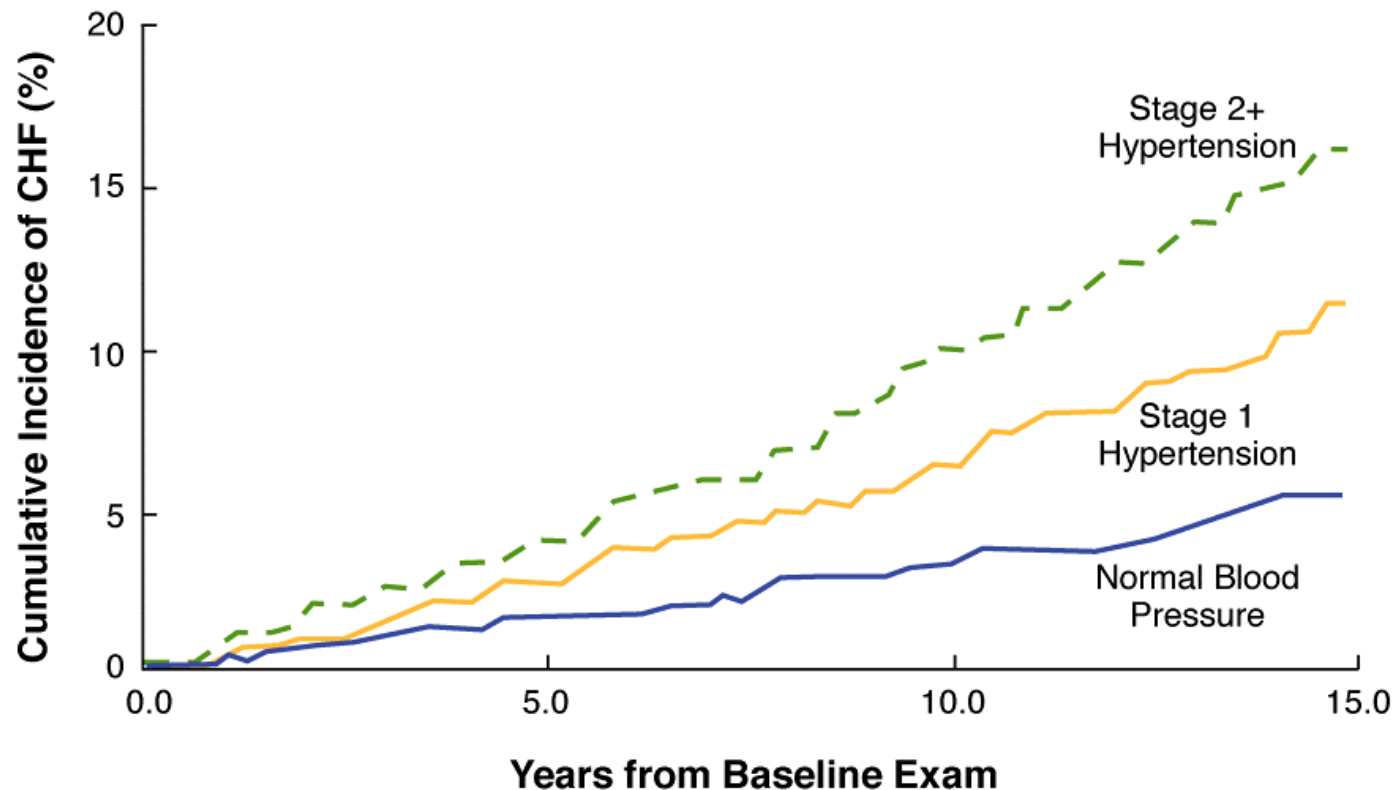
Prevalence of Risk Factors



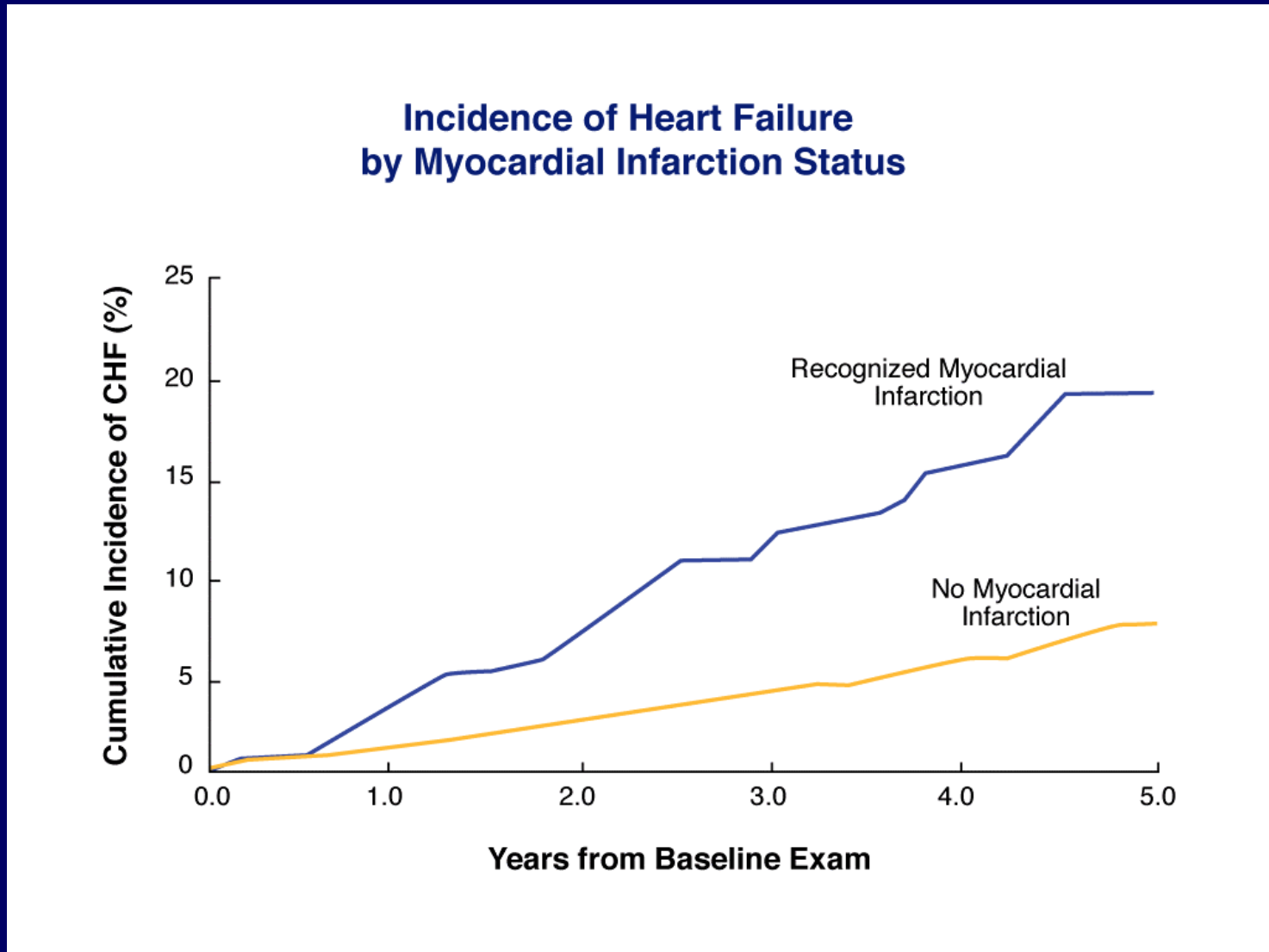
Epidemiology, Etiology, and Public Health Implications of Heart Failure

Hypertension and Heart Failure

**Incidence of Heart Failure in Men and Women
Age 50 to 79 by Hypertension Status**

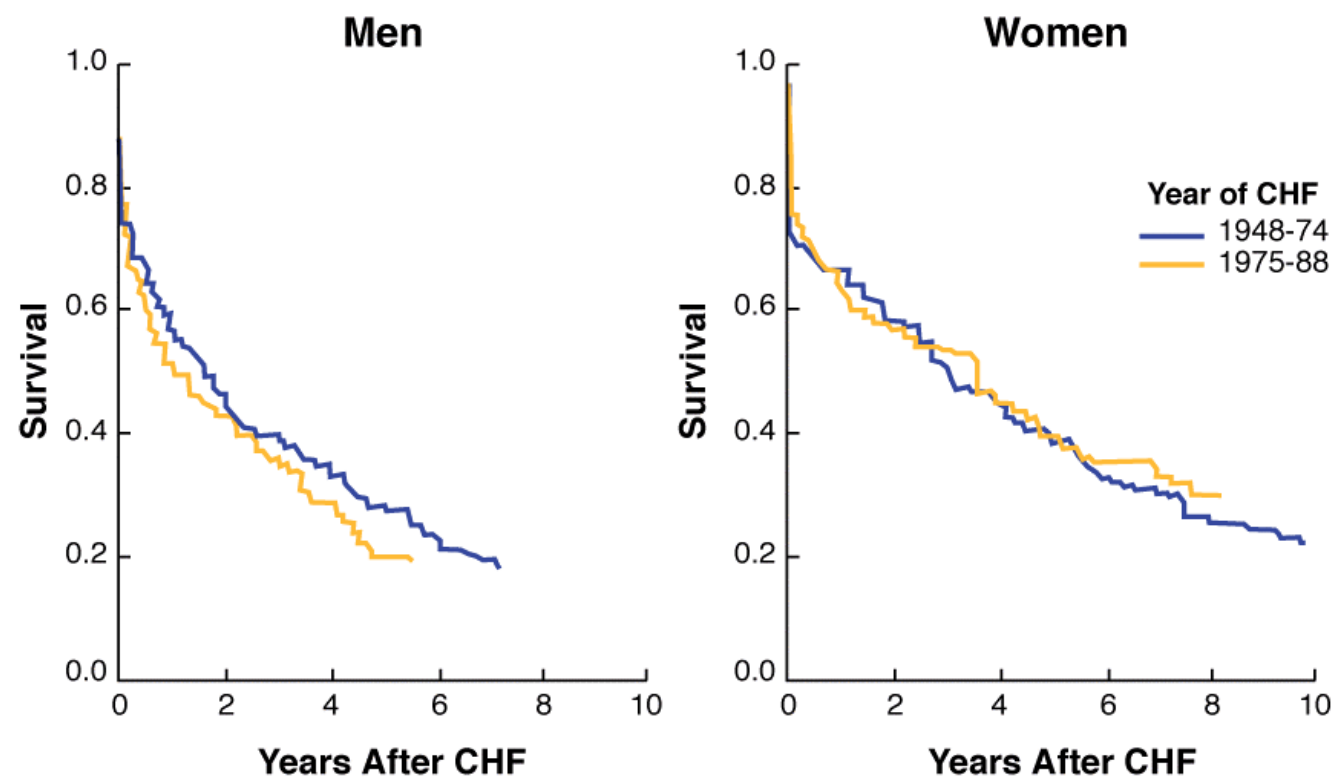


Myocardial Infarction and Heart Failure



Heart Failure: Survival

Age Adjusted Survival Rates After Diagnosis of Heart Failure



Program Overview